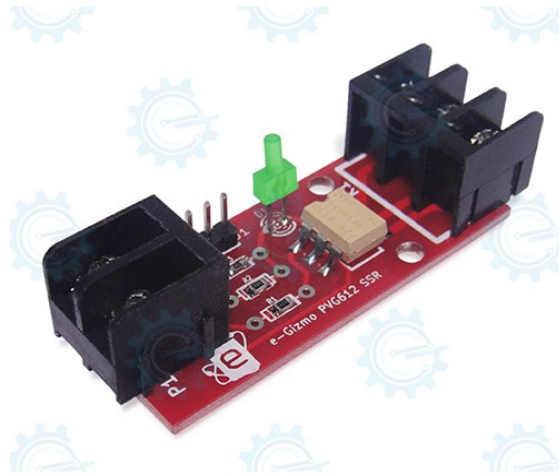


PVG612 SSR KIT



Technical Manual Rev 1r0



FEATURES:

e-Gizmo PVG612 SSR kit is normally open solid-state relay that can replace electromechanical relays in many applications. The compact PVG612 is particularly suited for isolated switching of high currents from 12 to 48 Volts AC or DC power sources. The applications of this type of SSR are mainly devices like Programmable Logic Controllers, Computer and Peripherals, Audio Equipment, Power Supplies and Power Distribution, Control of Displays and Indicators, and Industrial Automation.

- *Arduino Compatible*
- *Bounce-free operation*
- *High load current capacity*
- *Linear AC/DC operation*
- *4,000Vrms I/O Isolation*
- *Solid-State reliability*

GENERAL SPECIFICATIONS:

- **Input Supply: 3.3V or 5VDC**
- **Input min. current control: 5.0 mA**
- **Operating voltage range:**
0 - 60V(DC/AC peak)
- **Output: Single-pole, Normally open**
- **PCB Dimensions: 53mmx21mm**

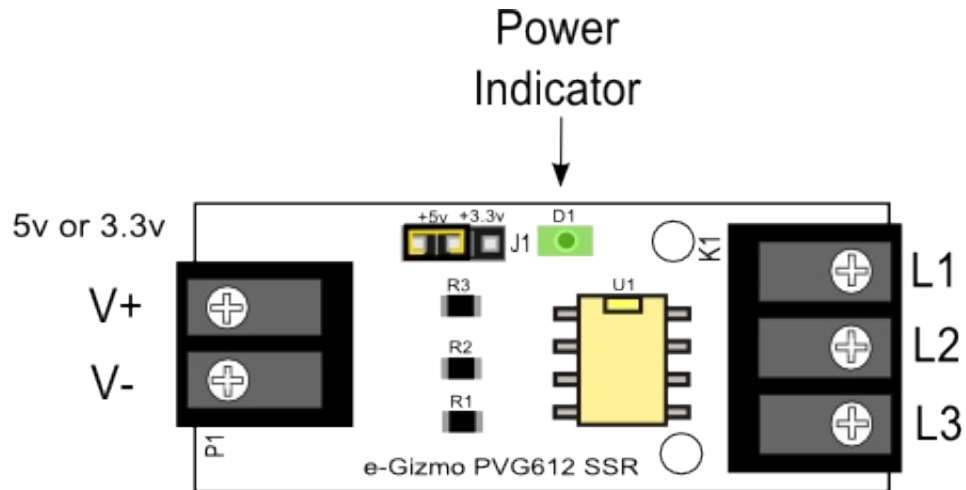
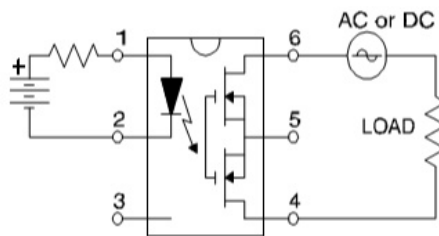


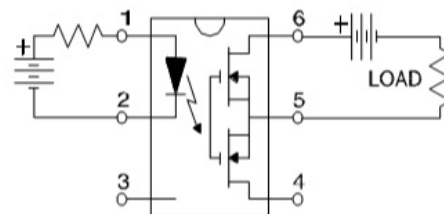
Figure 1. Major parts presentation of PVG612 SSR Kit.

Connection Diagrams

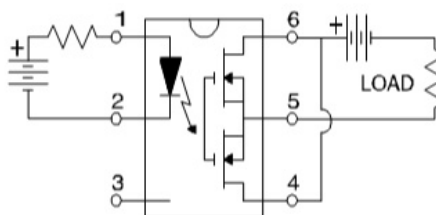
"A" Connection



"B" Connection



"C" Connection



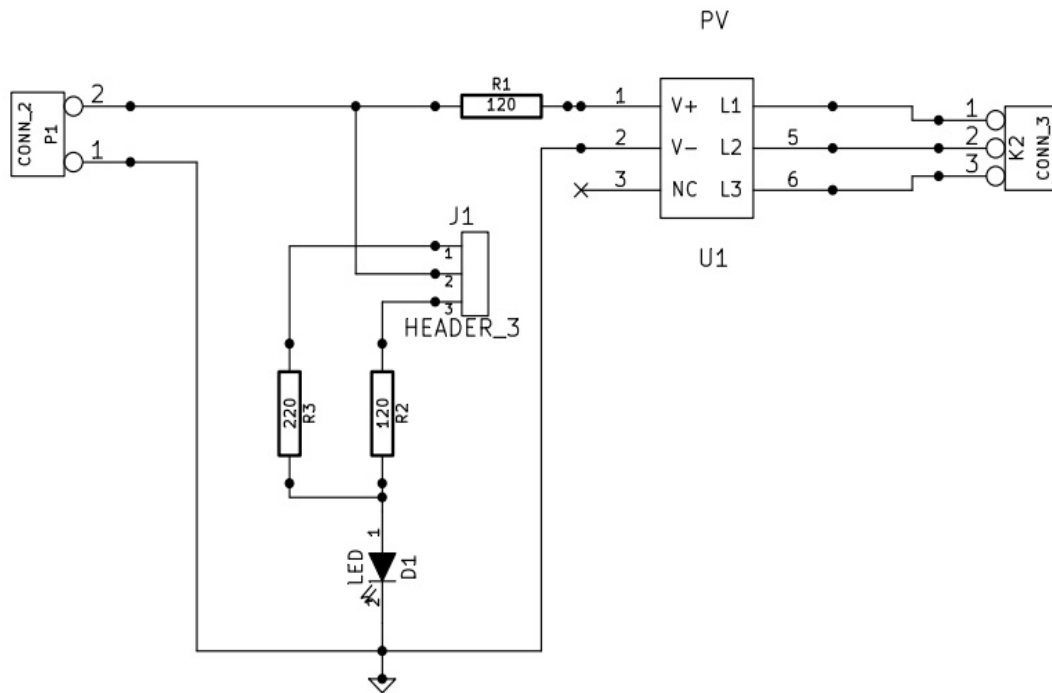


Figure 2. Schematic Diagram of PVG612 SSR kit.

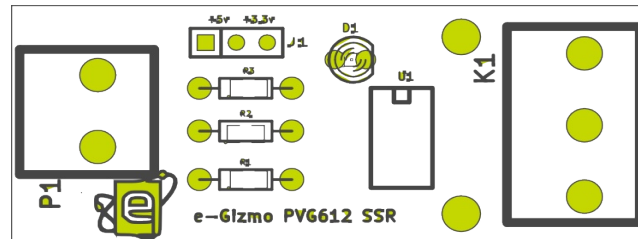


Figure 3. Parts placement.

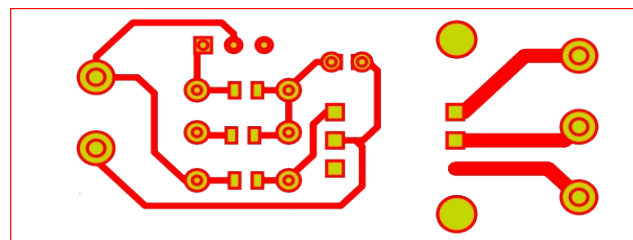


Figure 4. Top layer Guide .

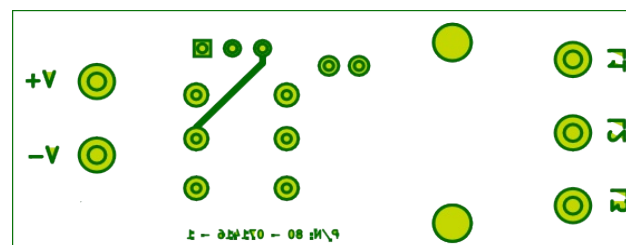


Figure 5. Bottom layer Guide .

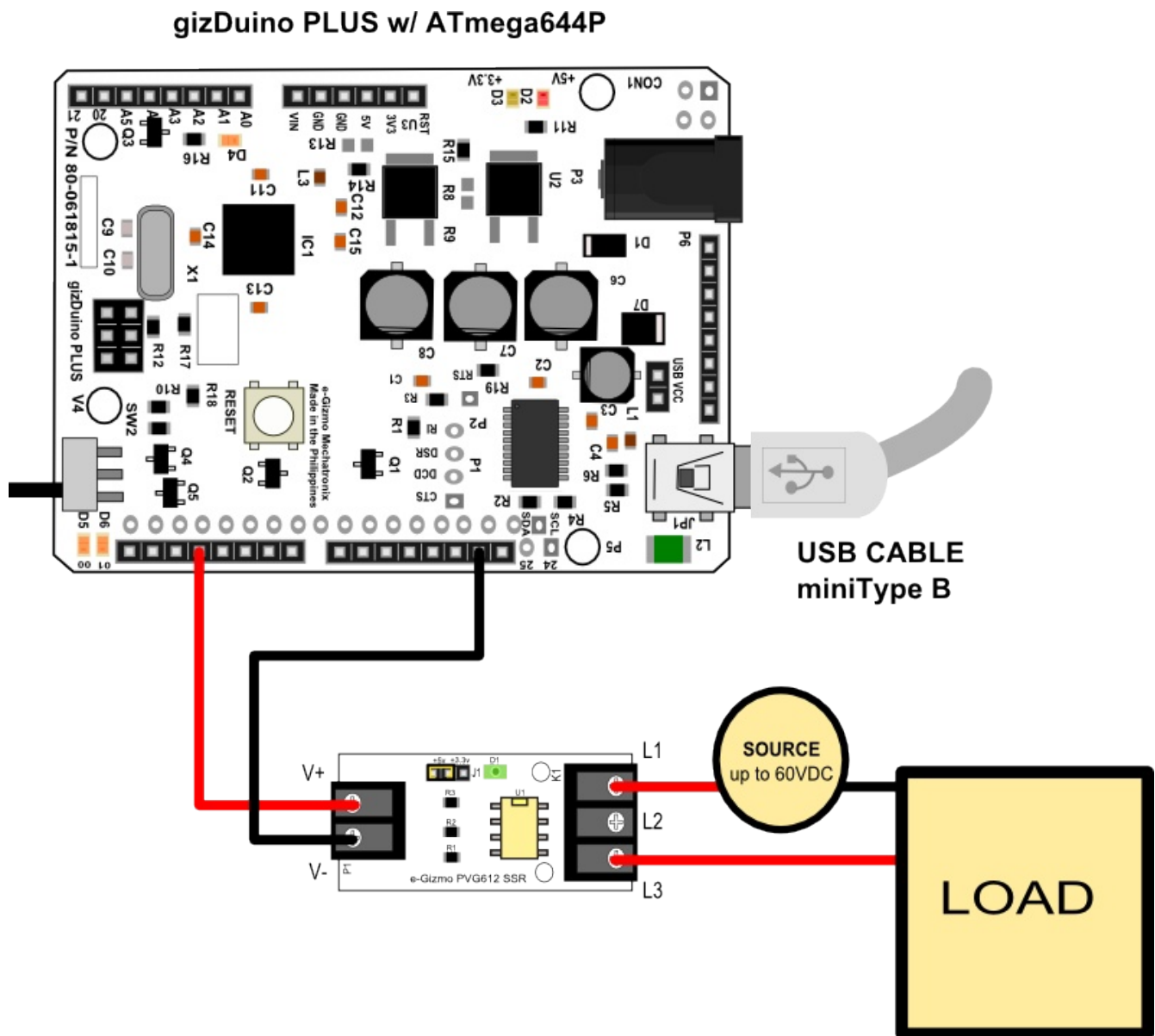


Figure 6. Sample Connection .