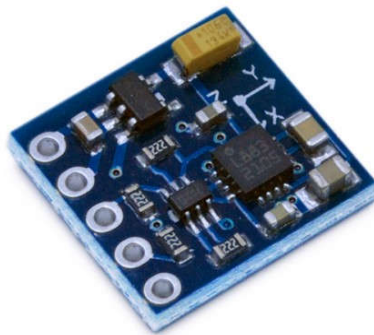


QMC5883L GY-271 COMPASS



Technical Manual Rev 1r0



3-Axis Magnetic Sensor QMC5883L is a multi-chip 3-axis magnetic sensor. Targeted for high precision applications such as compassing, navigation and gaming in drone, robot, mobile and personal hand-held devices. Compatible in all gizduino boards.

Features:

- 3- Axis Magneto-Resistive Sensors in a 3x3x0.8 mm³ Land Grid Array Package
- Operate over an extended temperature range of -40 degC to +85 degC.
- 16 Bit ADC with Low Noise AMR sensors
- 5 Milli-Gauss Field Resolution
- Wide Magnetic Field Range (± 8 Gauss)

General Specifications:

Wide range operation voltage: 2.16V to 3.6V

Low Power Consumption: 75uA

On Board IC: QMC5883L

Heading Accuracy: Enables 1 to 2 degrees

Data Output rate: Maximum 200Hz

PCB Dimension: 14mm x 13mm

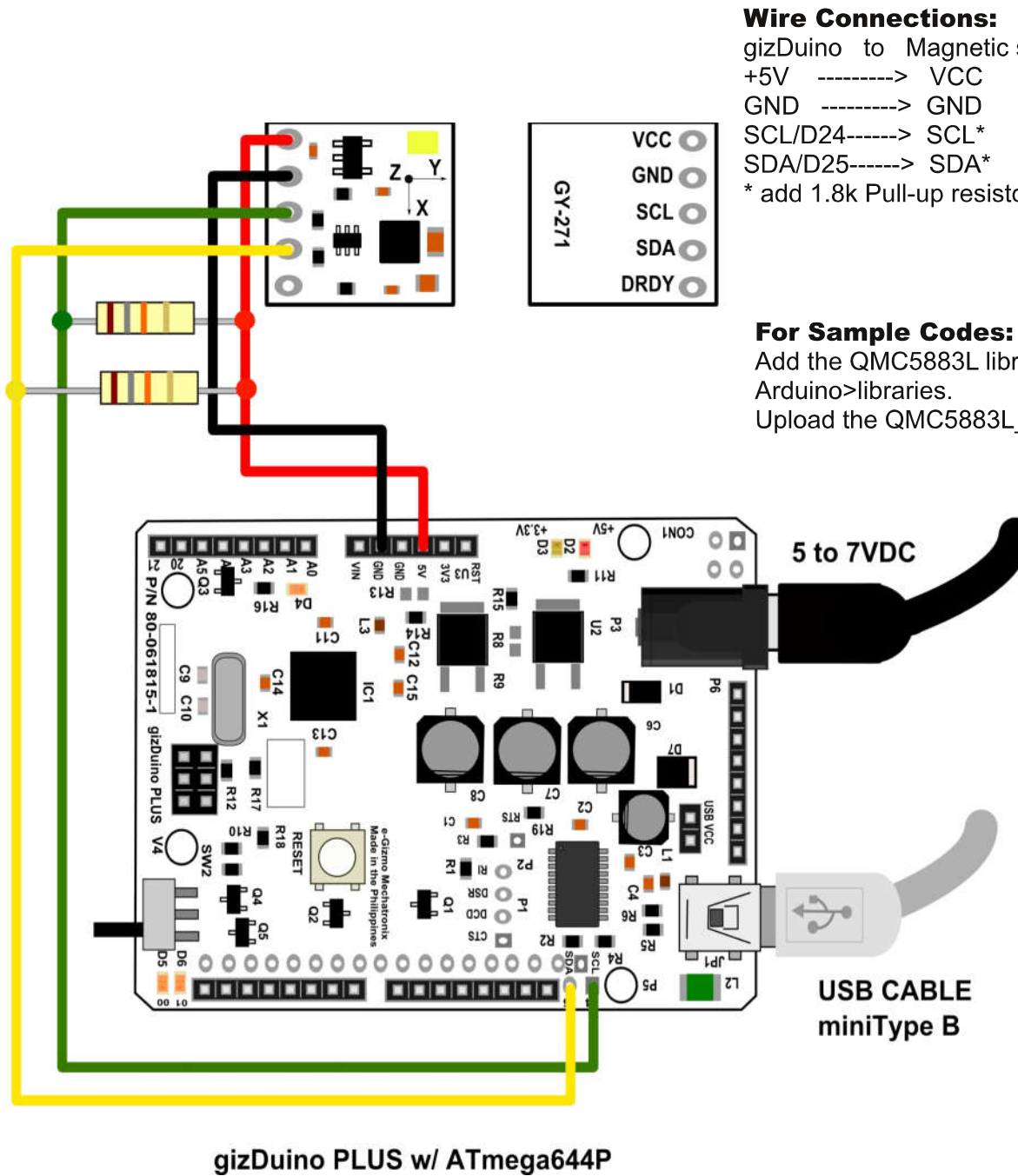


Figure 1: Sample connections with gizduino PLUS